

# Motorized Roller Conveyor Control System



## CONVEYTRAX™

The world's first **“No Programming”** Conveyor Control System

### Benefits

- Modules are Pre-engineered, low cost and compact
- Programming is NEVER required
- The system uses **true** plug and play networking with the proven CANOpen industrial network
- Intelligent external interfaces are supported with Ethernet connectivity
- The system is Web-Enabled and supports both static IP and DHCP
- **ConveyTrax™** provides robust encoder-less product information tracking
- LEDs and network messaging offer enhanced diagnostics
- The design is safe and utilizes low-voltage control
- There is no single point of failure
- Field commissioning is eliminated or greatly reduced

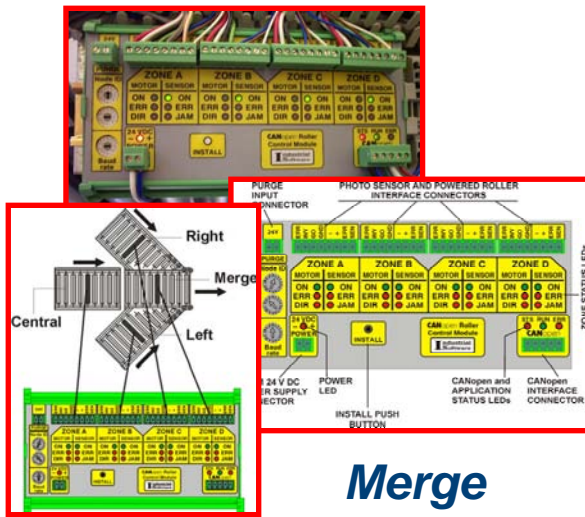
### General Description

**ConveyTrax™** is a modular, distributed and networked industrial system for conveyor control. **ConveyTrax™** consists of a series of electronic digital I/O modules mounted alongside the conveyor and is used to integrate with sensors and power train components to provide the functions of product transportation, accumulation, merging, diverting and **information tracking**.

Specifically designed for easy integration into OEM conveyor equipment, **ConveyTrax™** offers very compact dimensions and true plug and play capability at a very low cost. Although **ConveyTrax™** integrates easily with other control systems, PLCs and PCs are NOT required for control of your conveyor. Set-up procedures are very easy to follow and complex systems can be quickly configured through **RollOn**, the intuitive set-up software for **ConveyTrax™**.

# CONVEYTRAX™ Technology

The **ConveyTrax™** system is based upon the **CANOpen** industrial network for high-speed inter-module communication. This highly distributed modular architecture utilizes no master or slaves and requires no programming for operation. Information and commands for each conveyor zone (run, accumulate, jam, singulate, fault, carton ID, etc.) are broadcast to adjacent conveyor zones in real time. The complete conveyor control system is comprised of just three module types: 1) **CRCM** for control of up to four conveyor zones; 2) **DIO88** for control of actuators, pushers, diverters and external interlocks; and 3) **KIDWEB** for Ethernet-based communication with the control system for configuration, monitoring and diagnostics. Although not required for system operation, the PC-based software tool, **RollOn** is useful for the speedy configuration and commissioning of larger systems.

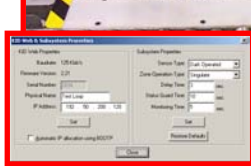


Merge

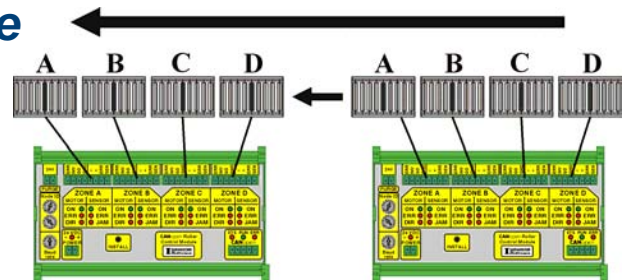
## CONVEYTRAX™



Accumulate

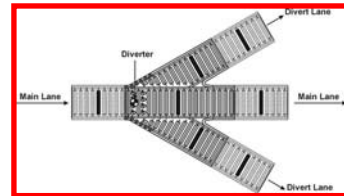


Singulate



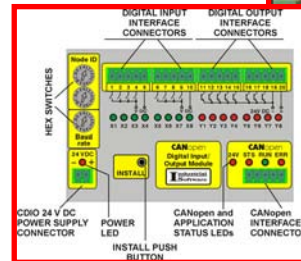
## CONVEYTRAX™ Applications

- Supply chain logistics
- Injection mold machinery discharge systems
- Parcel sortation systems
- Postal delivery systems
- Order fulfillment systems
- Pick-to-light takeaway systems
- Pick and pass systems
- In-motion weighing systems
- Asynchronous sorters
- Portable, mobile systems
- Automotive JIT handling systems
- Manufacturing routing systems
- Pharmaceutical fulfillment systems
- Third-party logistics support systems

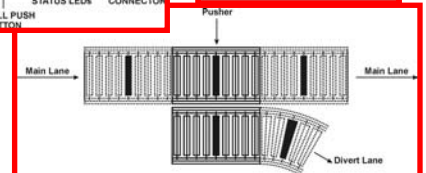
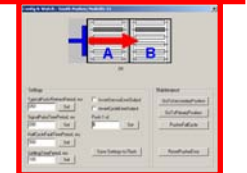
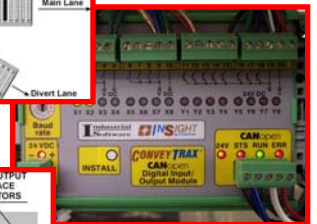


Divert

Track



Sort



*"It's all dumb steel without us"*